

## vLoc3 RTK-Pro Softwareupdate v1.34 – Add new features

(Includes all necessary steps from software version 1.26 to 1.34)

To unlock the new features, the free MyLocator3 Desktop App is required. This can be downloaded at [www.vivax-metrotech.com/support/downloads](http://www.vivax-metrotech.com/support/downloads).

### Procedure:

1. Start the MyLocator3 Desktop App
2. Connect the vLoc3 RTK-Pro receiver to the PC using the USB cable provided.
3. Switch on the receiver. The PC will automatically recognize the device.
4. To download the latest update to the receiver, click on the "Download" button in the "vLoc3-RTK-Pro" section on the left. After downloading the software, the receiver must be restarted.
5. In the next step, as soon as the receiver is switched on again, the MyLocator3 app will automatically load the actual configuration from the receiver, provided that the check mark is set at "Auto-load config" (See circle in figure 1). If this check mark is not set, then the configuration can be loaded manually as shown as point B in figure 1:

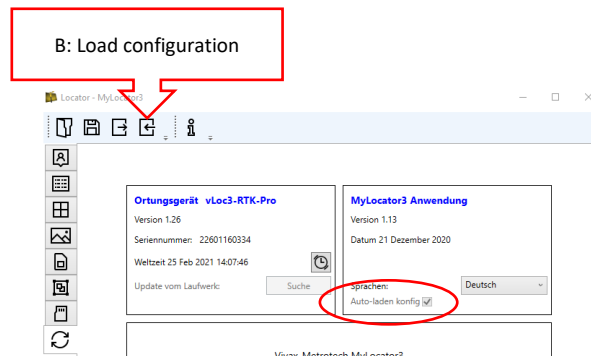


figure 1

6. As soon as the configuration is loaded, click on "Menu Settings" in the left selection bar (figure 2).

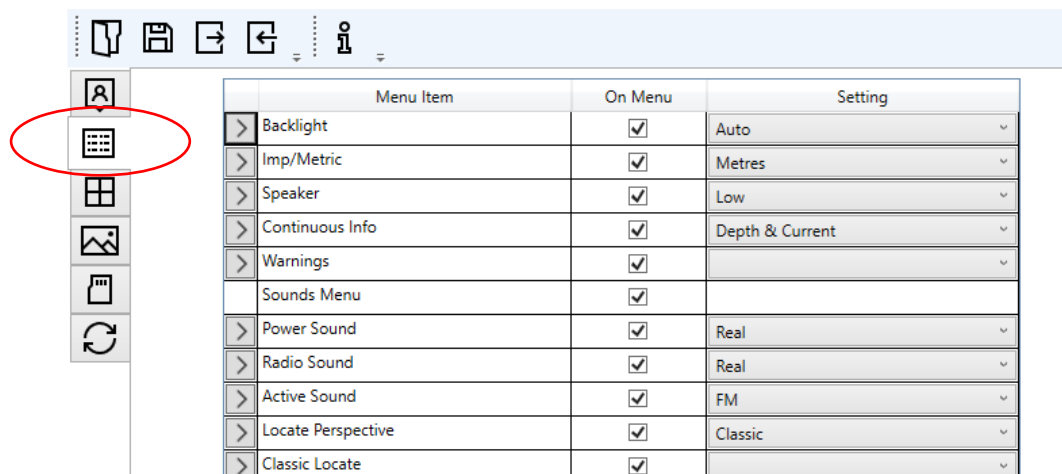


figure 2

Open the window as full screen or scroll down in the menu settings.

7. **Object feature logging and Walk-Back function (figure 3)**

Open the drop-down list at the item "Auto Log Features" <1> and set the checkmarks <2> at "Auto Log Features", "Disabled", "Enabled" and in the fields below "Log Feature" and "Walk Back". In the next step, open the drop-down list on the right side and select "Deactive" <3>. (figure 3)

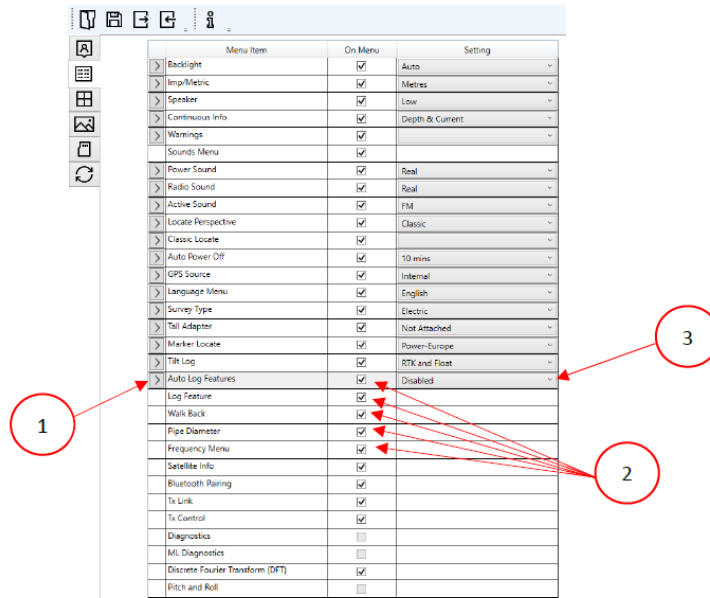


figure 3

8. **Add the long and survey adapters (figure 4)**

Open the drop-down list at the item "Adapter" <1> and set the checkmarks <2> at "Not attached", "Tall", "Survey" and „Long survey“. In the next step, set the checkmark at point <3>.

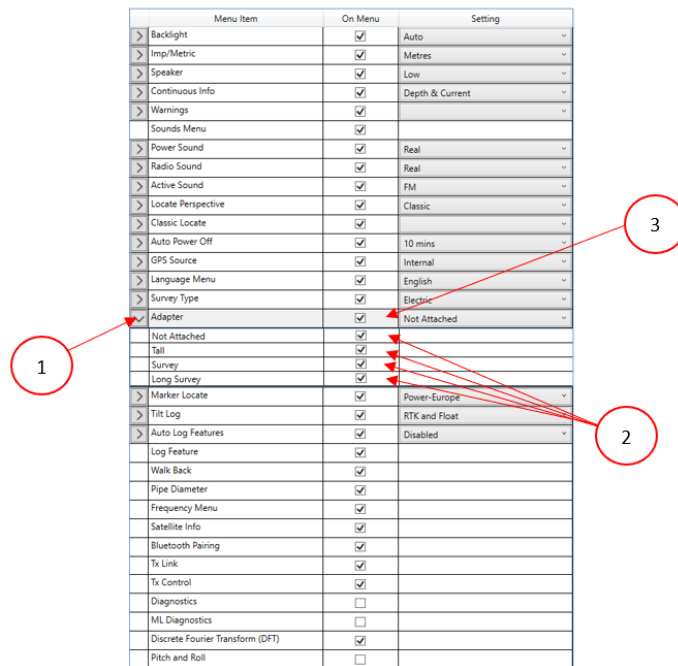


figure 4

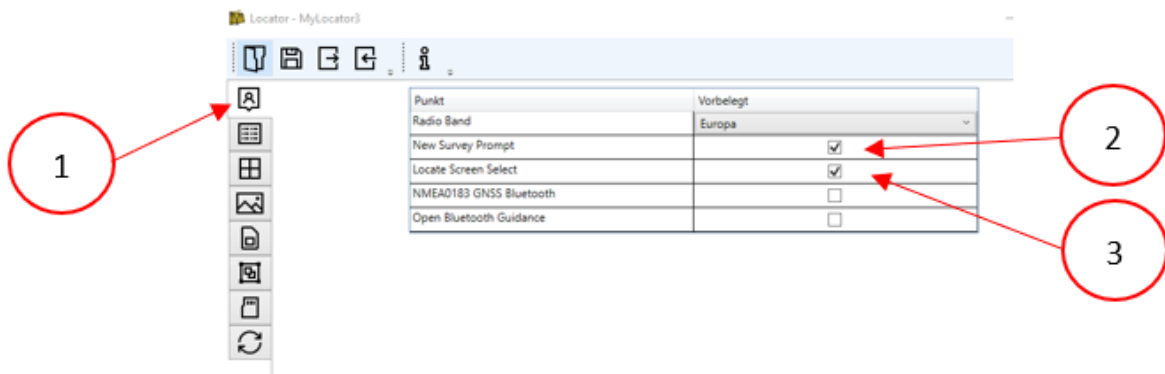
9. **Settings for „Start with new survey“ and „Selection of locate screens in a list** (figure 5)

First open the "Options" item in the left menu bar. <1>

Then the hooks can be set as follows:

- New Survey Prompt <2>: With this, the first query that appears after switching on the receiver is whether you want to start a new measurement. This makes sense to separate the data sets clearly for the export.

- Locate Screen Select <3>: This speeds up the selection of the different measurement methods (Classic View, Vector, etc.) considerably. Instead of jumping through the individual screens, the correct locate screen can be selected with a long press on the "Enter" key.



10. If you are still missing other check marks, for example for "Pipe diameter" or "Discrete Fourier Transform (DFT)", these can now also be set if required. Please remember that every change has a direct effect on the receiver menu and the functions in the device before you set or delete check marks.

11. The next step is to transfer the configuration to the receiver. Click on the icon shown in figure 4 in the upper taskbar of the MyLocator3 app.

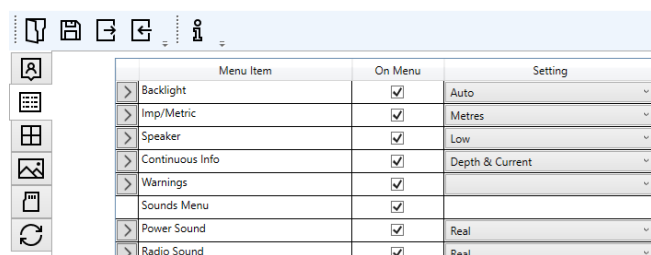


figure 4

12. After the configuration has been transmitted (duration approx. 5 seconds), switch off the receiver to save the configuration.